

A world map is shown in a light teal color, overlaid with several concentric, semi-transparent white circles that resemble radar waves or signal ripples, centered across various geographical locations.

Introduction to Light Duty Products

LDP 101



Partners in Productivity

What's Covered

- Light Duty Conveyor Systems
- Splicing Options
- Flexco Mechanical Fasteners
- Flexco Endlessing Products
- Flexco Belt Cleats

Light Duty Conveyor Systems

- Package & parts handling
- Recycling & scrap



Light Duty Conveyor Systems

- Food processing
- Agriculture



Light Duty Conveyor Systems

- Baggage handling
- Pharmaceutical
- Metal detection
- X-ray equipment
- Commercial laundry
- Filter media



Light Duty Conveyor Systems

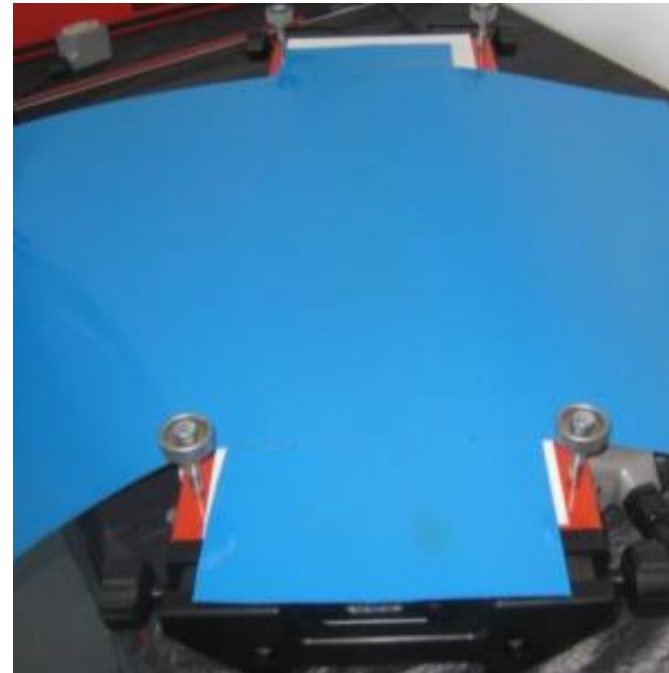
Downtime



lost production =
decreased revenue

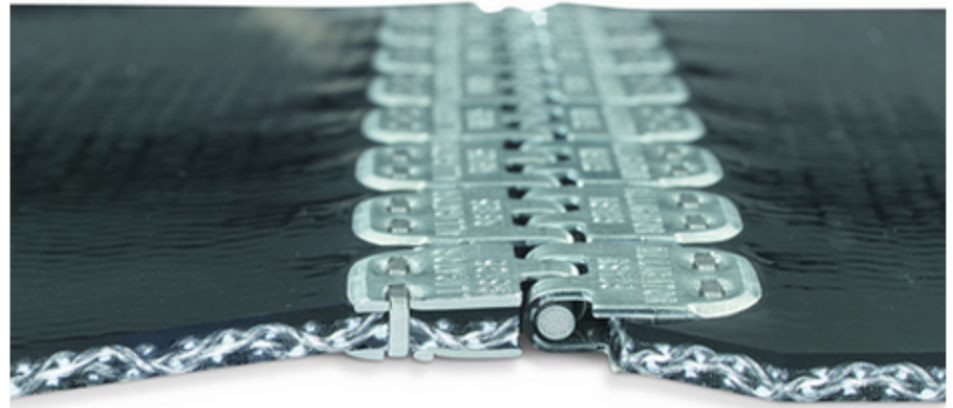
Splicing Options

1. Mechanical belt fasteners
2. Endless splices



Mechanical Belt Fasteners

- Fasteners mechanically installed on both ends of belt
- Two ends are joined by a hinge pin or connecting pin, creating the endless loop



Mechanical Belt Fasteners

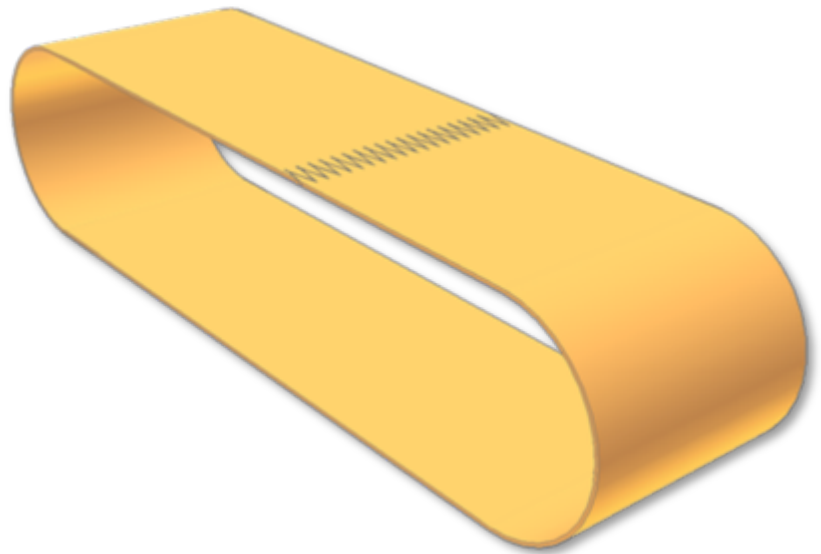
Advantages

- Low cost installation tools
- Quick & easy installation
- Visual wear/damage inspection
- Removable pin
- Compatible with most environmental & belt conditions
- Numerous styles of fasteners



Endless Splicing

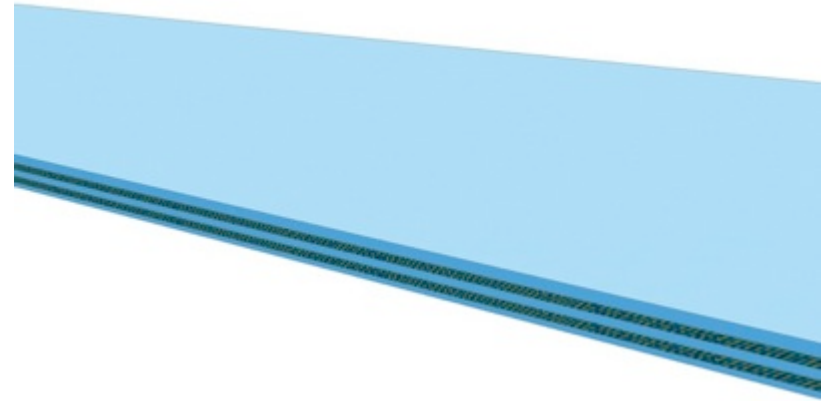
- Ends of the belt are thermally welded together to create a continuous band



Endless Splicing

Advantages

- Smooth splice
- Sanitary
- Non-marking
- Compatible with small pulleys
- Quiet running splice



Flexco Metal Fasteners

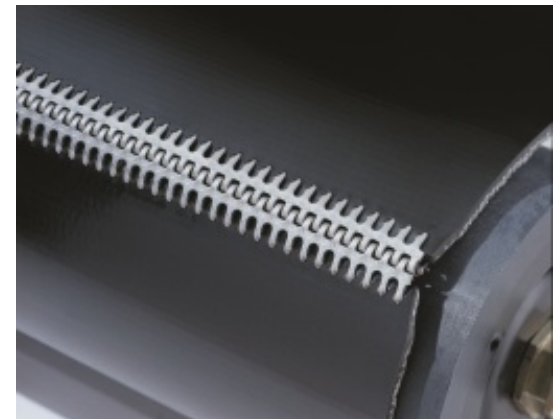
Clipper® Wire Hooks



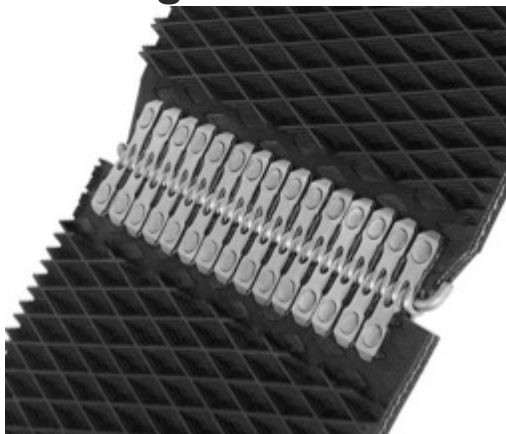
Alligator® Staple



Alligator® Lacing



Alligator® Rivet



Alligator® V-Belt



Flexco Mechanical Fasteners

Clipper[®] Wire Hooks

- Low-profile, machine-applied hook fasteners
- Variety of wire diameters, leg and point lengths, strip lengths, and styles
- Installed with on-site maintenance lacing tools or high volume production lacers



Flexco Mechanical Fasteners

Alligator[®] Staple

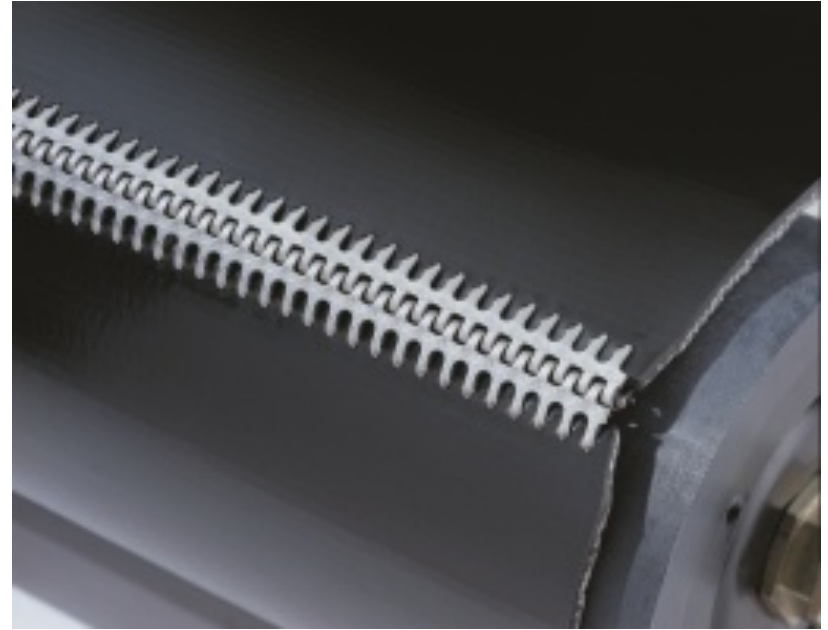
- One-piece fastener strips with pre-inserted staples
- Strong, smooth splice that resists impact damage
- Installed with lightweight, portable tools



Flexco Mechanical Fasteners

Alligator[®] Lacing

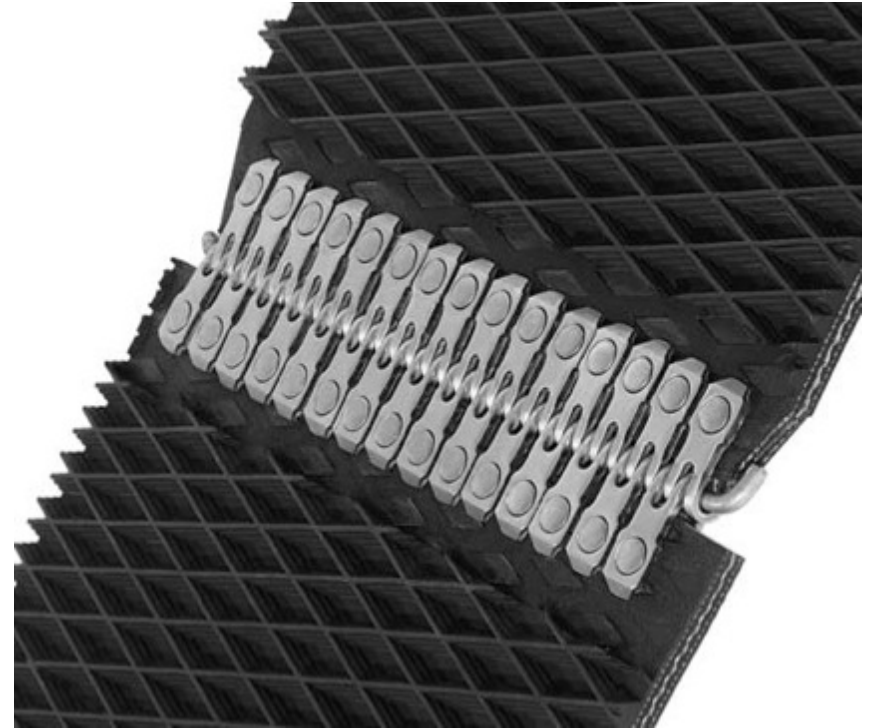
- Interlaced fastener strips that create an exceptionally smooth joint
- Continuous length strips to fit any belt width
- Installed with hammer – no specialty tools needed



Flexco Mechanical Fasteners

Alligator[®] Rivet

- Fastener strips secured to belt with rivets
- For round hay balers
- Installed with portable tools for on-site installation



Flexco Mechanical Fasteners

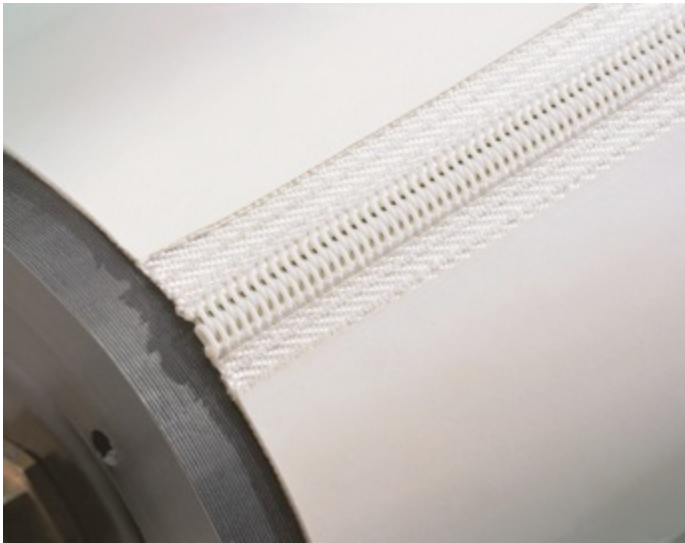
Alligator[®] V-Belt

- Single, strong joint made from plated steel
- For power transmissions, agriculture and manufacturing
- Installed with 1 lb hammer



Flexco Non-Metal Fasteners

Alligator® Spiral Lace



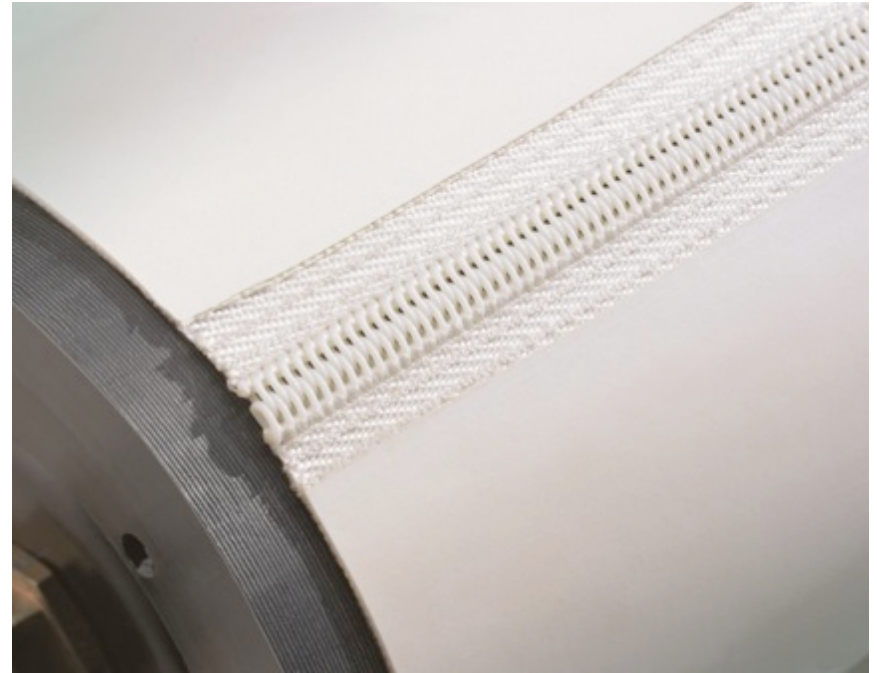
Alligator® Plastic Rivet



Flexco Mechanical Fasteners

Alligator[®] Spiral Lace

- Non-metallic fasteners fabricated into the belt for a smooth, non-marking splice
- Ideal for small pulleys
- Should be installed by experienced fabricators
- Can be installed using Flexco's Novitool[®] belt fabrication equipment



Flexco Mechanical Fasteners

Alligator[®] Plastic Rivet

- One-piece fastener with beveled edges
- Installed with an automated tool that welds the rivet heads of the fastener through heat and friction



Flexco Endless Products

Novitool® Line

- 3 simple & efficient tools for endless splicing
- Designed for thermoplastic conveyor belting



Flexco Endlessing Products

Ply 130™

- For ply separation
- Can split between layer of conveyor belt in single pass
- Operated with foot pedal
- Guarded blade
- Heavy duty cart with storage is an optional accessory



Flexco Endlessing Products

Pun M™

- For punching fingers into belt ends
- Manually operated
- Three standard widths
- Ability to punch belts wider than tool
- Multiple punchboards for different finger lengths



Flexco Endlessing Products

Aero™ Press

- Uses heat and pressure to create an endless splice
- Simple, plug-in design
- No external components
- Air cooled
- Only 8-12 min for splice instead of 45-60 min
- Optional workshop stand accessory available



Flexco Belt Cleats

Tatch-A-Cleat® Line

- Cleats attached to the material carrying side of the belt
- Mechanically fastened, heat welded or chemically bonded
- Prevent material rollback
- Convert flat belts to incline belts
- Maximize carrying capacity
- Accommodates counting and sorting



Flexco Mechanical Belt Cleats



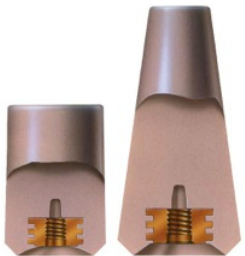
Model L



Model HD



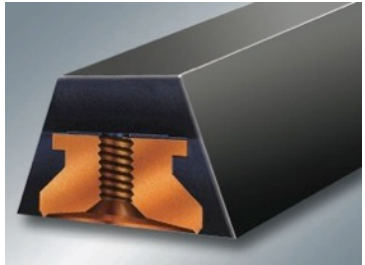
Econo-Cleat®



Tatch-A-Lug®



Tatch-A-Peg™

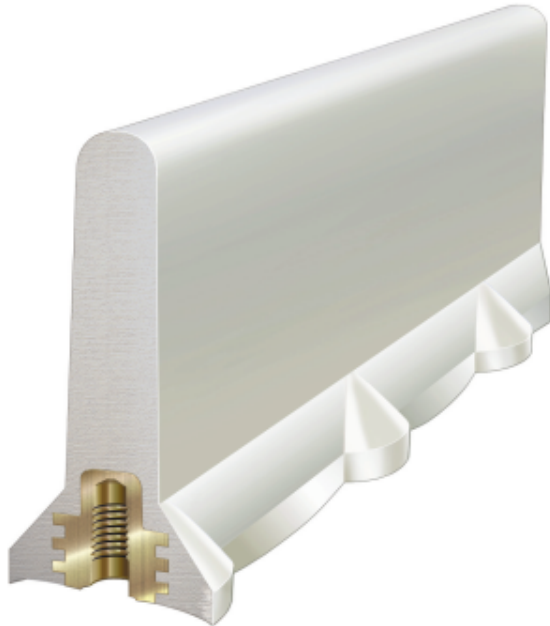


Tatch-A-Guide®

Flexco Mechanical Belt Cleats

Model L

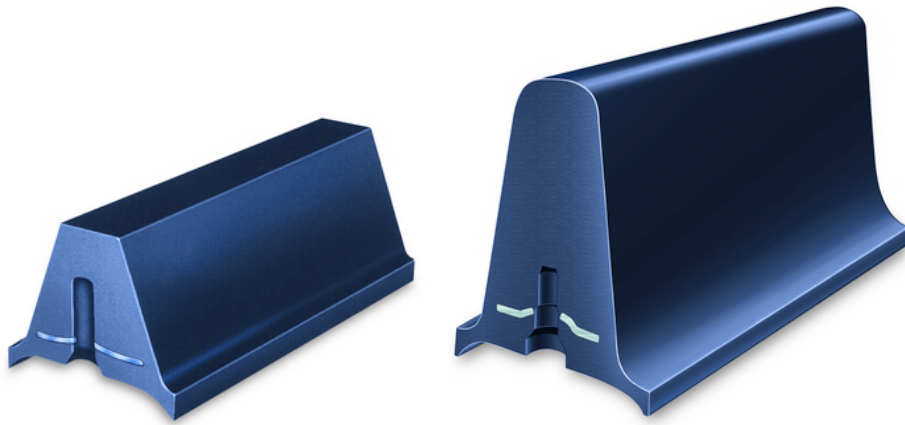
- Light duty applications
- Fully rounded top
- Black or white



Flexco Mechanical Belt Cleats

Model HD

- Heavy duty applications
- Stands up to abrasion, impact
- Flat or round top
- Black



Flexco Mechanical Belt Cleats

Econo-Cleat[®]

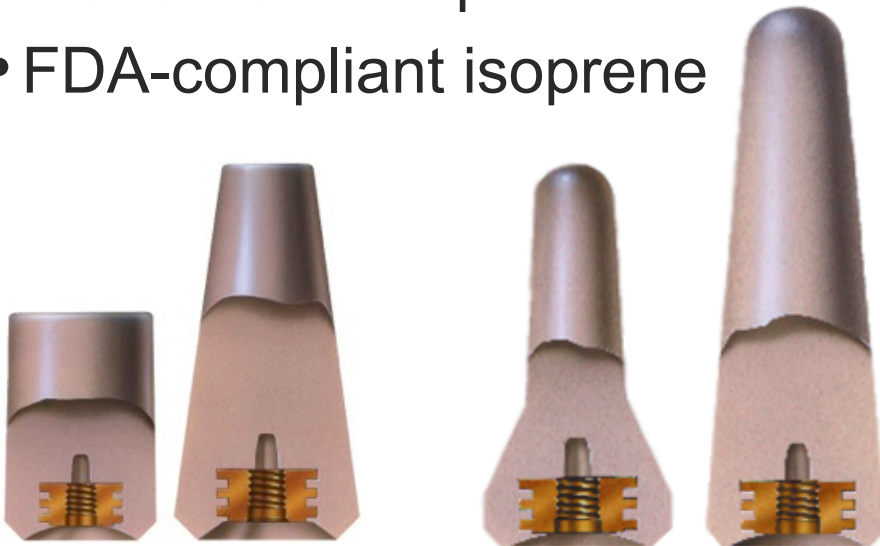
- Long-lasting & economical
- Harvesting & material handling
- Curved shape
- Concave bottom
- Rubber or PVC



Flexco Mechanical Belt Cleats

Tatch-A-Lug[®] and Tatch-A-Peg[™]

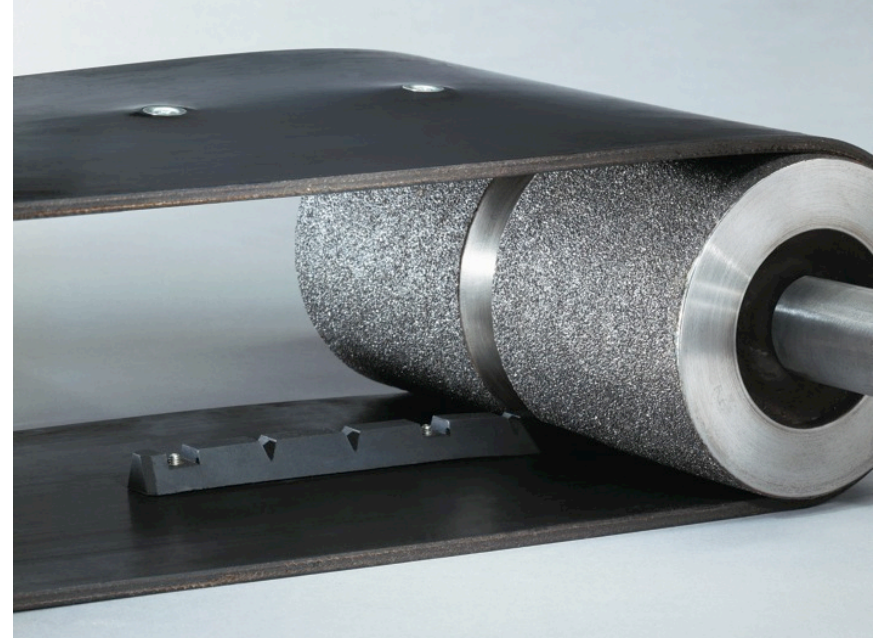
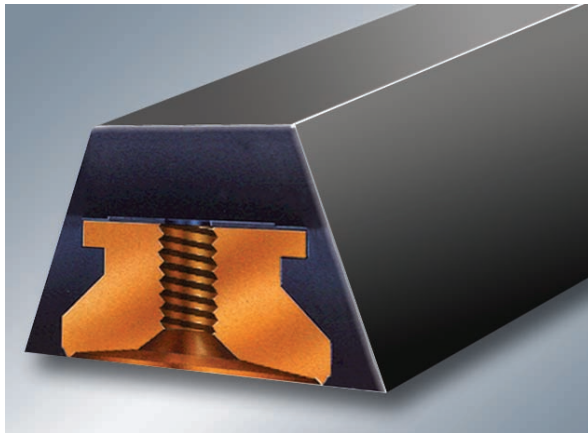
- Inexpensive and effective
- Cased, boxed, bagged goods
- Configured in any pattern
- Flat or round top
- FDA-compliant isoprene



Flexco Mechanical Belt Cleats

Tatch-A-Guide®

- Attached to non-material carrying side
- Aligns into grooved pulley
- Keeps belts centered
- Neoprene rubber



Flexco Bondable Cleats

Bondable Cleats Also Available

- T Cleats –
perpendicular to belt
- Scoop Cleats –
60 degree vertical angle
- V-Guides –
attached to underside of belt
- Flanges –
attached longitudinally to outer edges of belt



Summary

- Light Duty Conveyor Systems
- Splicing Options
- Flexco Mechanical Fasteners
- Flexco Endlessing Products
- Flexco Belt Cleats

Additional Resources

**For more information visit [http://
www.flexco.com](http://www.flexco.com)**